

Kent United White B02

Kent United

Kent, WA

B02 total strength=503

attack=0.32 defense=0.4

fall league = NPSL B11D3

alt names used:

KYSA KENT UNITED B02 WHITE (WA)

Kent United B02 White

Kent United White [B02]

Venues played:

Kent Cornucopia Cup BU11 Silver U11

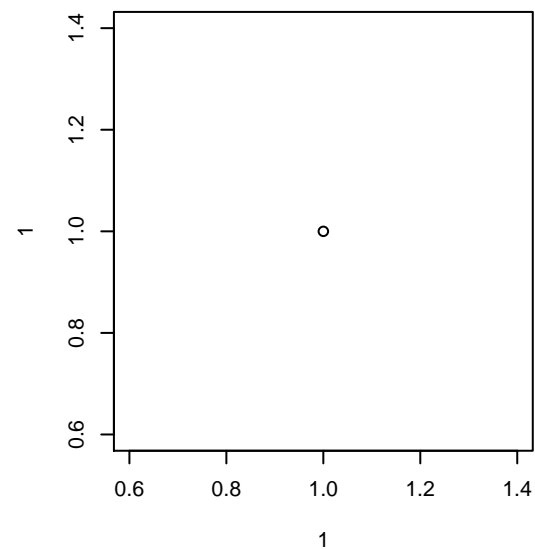
Blast Off BU11 C

Xtreme Cup BU11

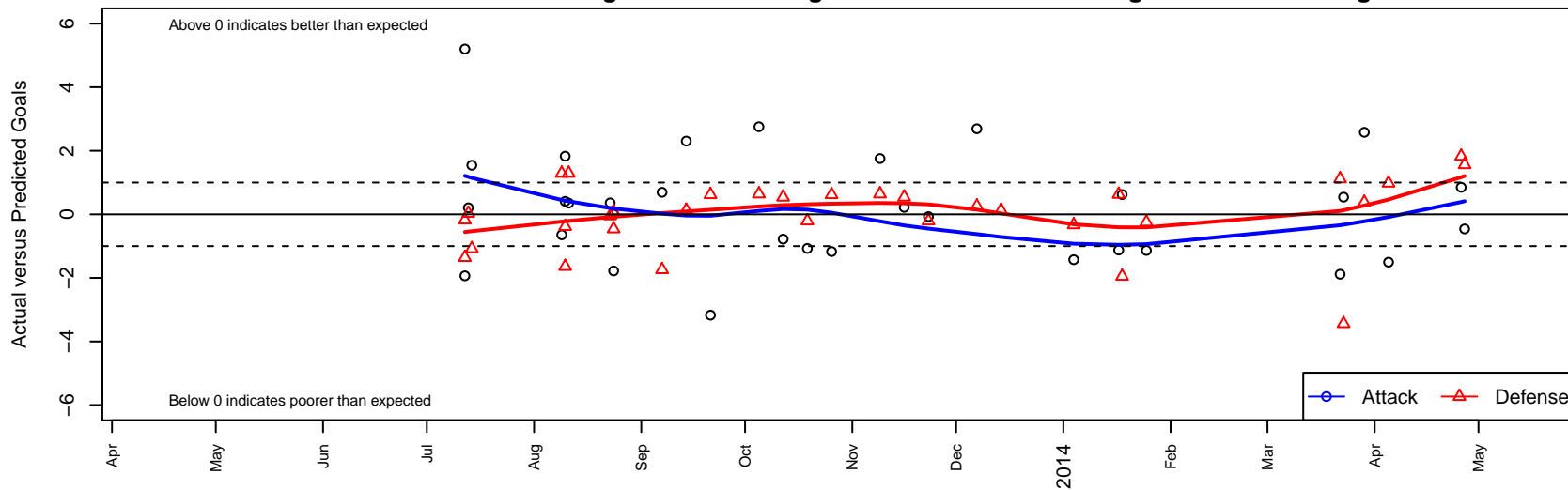
NPSL B11D3

Founders Cup B02

Challenge Cup B02 Division 3 – Challenge 3



Kent United White B02
Dots are actual minus expected GF (blue circles) and GA (red triangles).
Blue line is smoothed change in attack strength. Red is smoothed change in defense strength.



	date	home		away		venue	pred.home	pred.away
'6900	2014-04-27	Kent United White B02	1	Crossfire Premier D B02	0	Challenge Cup B02 Division 3 – Challenge 3	1.46	1.56
'6690	2014-04-26	Eastside FC Blue B02	0	Kent United White B02	2	Challenge Cup B02 Division 3 – Challenge 3	1.83	1.15
'5596	2014-04-05	Washington Timbers Lime B02	0	Kent United White B02	1	Challenge Cup B02 Division 3 – Challenge 3	0.98	2.50
'5425	2014-03-29	Slammers White B02	0	Kent United White B02	6	Challenge Cup B02 Division 3 – Challenge 3	0.38	3.42
'5316	2014-03-23	Kent United White B02	2	Crossfire Premier D B02	5	Challenge Cup B02 Division 3 – Challenge 3	1.46	1.56
'5146	2014-03-22	3 Rivers Green B02	0	Kent United White B02	0	Challenge Cup B02 Division 3 – Challenge 3	1.11	1.88
'1692	2014-01-25	Seattle United Shoreline Blue B02	2	Kent United White B02	1	Founders Cup B02	1.75	2.14
'1304	2014-01-18	Kent United White B02	3	Pacific FC Vancouver Chelsea B03	3	Founders Cup B02	2.38	1.05
'1268	2014-01-17	Seattle United S White B02	0	Kent United White B02	2	Founders Cup B02	0.63	3.12
'0882	2014-01-04	BYSC Select B02	1	Kent United White B02	2	Founders Cup B02	0.67	3.43
'0754	2013-12-14	Kent United White B02	7	Marysville Force B01	0	NPSL B11D3	13.70	0.12
'0565	2013-12-07	BIFC White B02	0	Kent United White B02	8	NPSL B11D3	0.26	5.31
'9037	2013-11-23	Crossfire Select Johnson B02	1	Kent United White B02	2	NPSL B11D3	0.79	2.07
'8351	2013-11-16	Kent United White B02	3	ISC Arsenal Red B02	0	NPSL B11D3	2.78	0.54
'7585	2013-11-09	Kent United White B02	5	Seattle United NE White B02	0	NPSL B11D3	3.24	0.64
'5687	2013-10-26	Kent United White B02	8	EYSA B02	0	NPSL B11D3	9.17	0.62
'4748	2013-10-19	Kent United White B02	1	Crossfire Select Johnson B02	1	NPSL B11D3	2.07	0.79
'3697	2013-10-12	ISC Arsenal Red B02	0	Kent United White B02	2	NPSL B11D3	0.54	2.78
'2656	2013-10-05	Seattle United NE White B02	0	Kent United White B02	6	NPSL B11D3	0.64	3.24
'0784	2013-09-21	EYSA B02	0	Kent United White B02	6	NPSL B11D3	0.62	9.17
'9810	2013-09-14	Marysville Force B01	0	Kent United White B02	16	NPSL B11D3	0.12	13.70
'8868	2013-09-07	Kent United White B02	6	BIFC White B02	2	NPSL B11D3	5.31	0.26
'7913	2013-08-24	Kent United White B02	1	ISC Arsenal Red B02	1	Xtreme Cup BU11	2.78	0.54
'7920	2013-08-24	WPFC Fury Black B03	1	Kent United White B02	2	Xtreme Cup BU11	1.08	2.00
'7635	2013-08-23	Kent United White B02	1	WS Wildcats B02	2	Xtreme Cup BU11	0.64	1.95
'6445	2013-08-11	Kent United White B02	2	MVP Rapids White B02	0	Blast Off BU11 C	1.65	1.29
'6089	2013-08-10	Kent United White B02	11	EYSA B02	1	Blast Off BU11 C	9.17	0.62
'6091	2013-08-10	FWFC White B02	2	Kent United White B02	5	Blast Off BU11 C	0.36	4.59

	date	home		away		venue	pred.home	pred.away
5856	2013-08-09	Kent United White B02	1	MVP Rapids White B02	0	Blast Off BU11 C	1.65	1.29
3151	2013-07-14	FC Alliance C B02	2	Kent United White B02	4	Kent Cornucopia Cup BU11 Silver U11	0.92	2.46
2889	2013-07-13	Eastside FC Grey B02	1	Kent United White B02	3	Kent Cornucopia Cup BU11 Silver U11	1.03	2.79
2702	2013-07-12	Kent United White B02	11	Sparta White B02	1	Kent Cornucopia Cup BU11 Silver U11	5.80	0.82
2704	2013-07-12	FC Kent Black B02	3	Kent United White B02	1	Kent Cornucopia Cup BU11 Silver U11	1.64	2.93